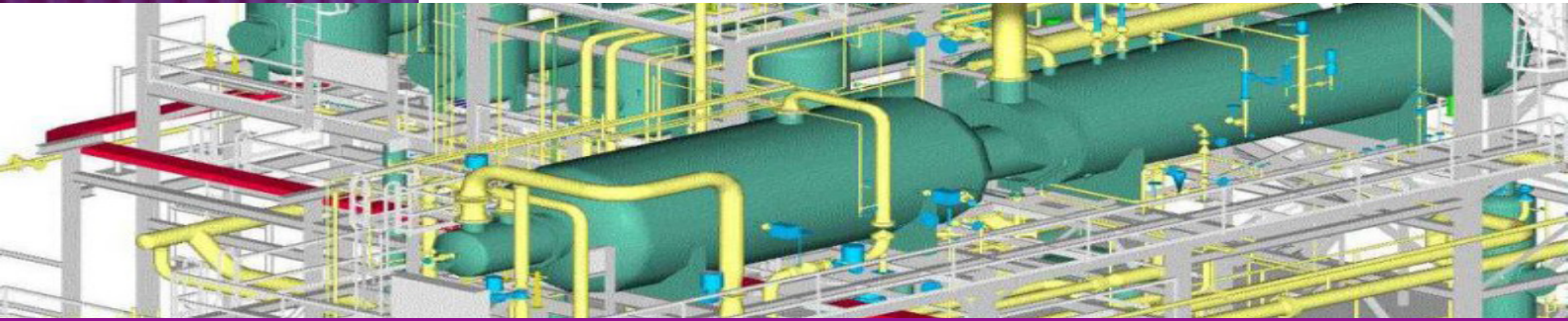


Piping BoQ-Rates Europe (DACE)



Piping BoQ-Rates Europe (DACE)

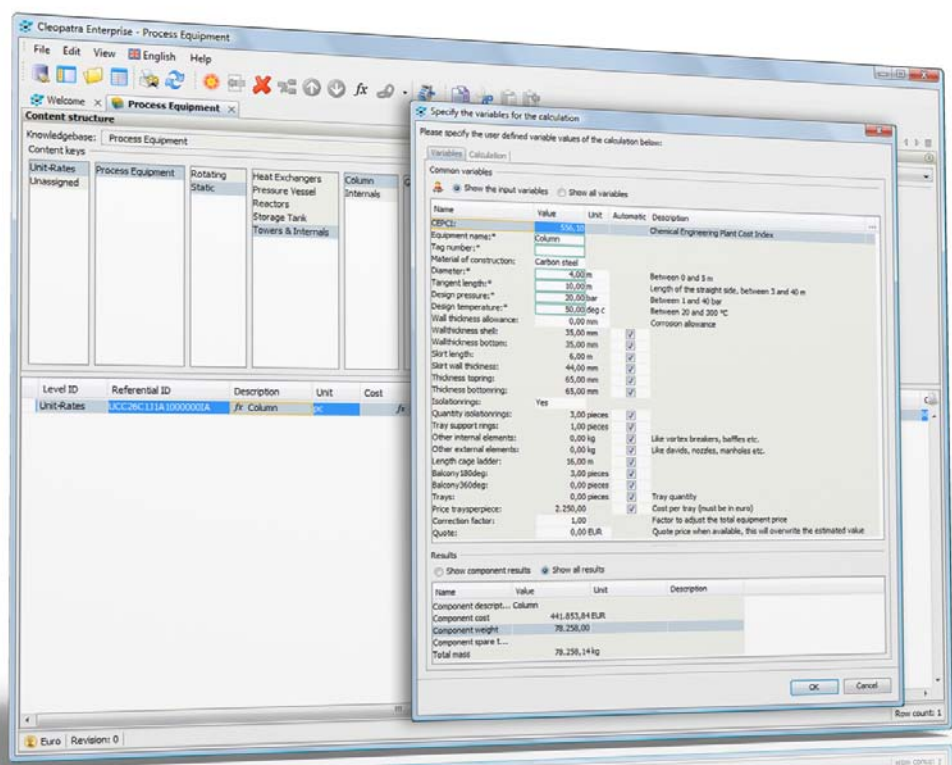
The Cost Engineering knowledgebase with information on piping Bill of Quantity (BoQ) rates for Europe contains combinations of multiple unit-rates for fast estimating purposes. The knowledgebase Piping BoQ-Rates Europe is composed by using parameters defined by Cost Engineering based on historical information. The BoQ-Rates are piping components up to 24" either with or without insulation or personal protection for carbon steel, stainless steel, and high alloy piping such as duplex, alloy 20 and hastelloy. These piping components are built up with unit-rates and contain all the components from putting up the first support to final testing.

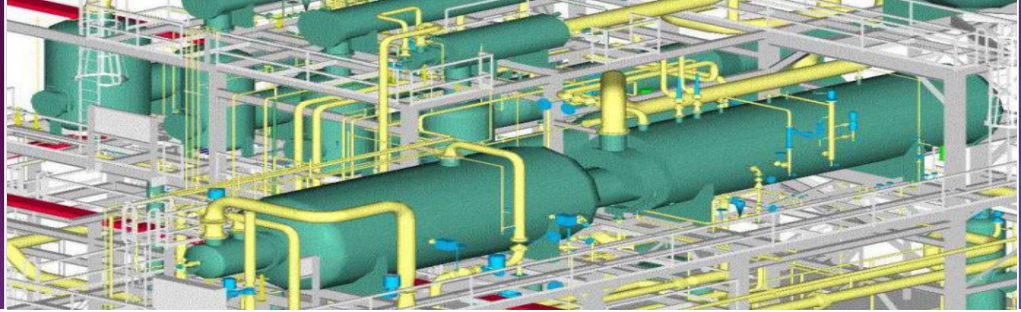
The knowledgebase Piping BoQ-Rates Europe is based on the DACE Labour Norms as they are supplied by the DACE. However, where DACE only supplies the labour norms, Cost Engineering has added price information as well as adding

other details to the knowledgebase. This means that the knowledgebase Piping BoQ-Rates Europe now gives you all the data you need for the estimation of any piping component. The knowledgebase Piping BoQ-Rates Europe holds all the information you need to estimate your projects quickly and accurately based on electronically generated Material Take Off's (MTO). The knowledgebase Piping BoQ-Rates Europe is normally applied for estimates according to AACE Cost Estimate Classification System Class 1 and Class 2.

All facets of piping work are covered by this knowledgebase. From the cost of an actual unit to the labour hours involved. All projects you are looking for can be covered easily from the information available from this knowledgebase.

“Quantify your estimate in seconds”





Piping BoQ-Rates Europe (DACE)

Knowledgebase Specifications

Piping BoQ-Rates Europe (DACE)

Piping BoQ-Rates:

Disciplines:

- Piping
- Insulation
- Painting

Activities:

- Prefabrication
- Field installation
- Dismount
- Supply

Piping BoQ-Rates:

Pipe with following Components

- Handling
- Pipe supports
- Hydrostatic testing
- Painting
- Insulation
- Material

Fittings with following Components

- Handling
- Welds
- X-Ray testing
- Gamma testing
- Painting
- Insulation
- Heat Treatment
- Material

Flanges with following Components

- Handling
- Flange connections
- Welds
- X-Ray testing
- Gamma testing
- Painting
- Insulation
- Heat Treatment
- Material

Valves with following Components

- Handling
- Flange connections
- Painting
- Insulation
- Material

Ranges:

- Pipe diameters ½" - 24"
- Insulation thickness 30 -> 140 mm

Materials:

- Carbon Steel
- Stainless Steel
- Duplex
- Alloy 20
- Hastelloy
- Titanium

Labour rates:

- Fitter
- Welder
- NDT tester
- Assistant tester
- Insulation worker
- Painter
- Grit Blaster



COST ENGINEERING

www.CostEngineering.eu
Sales@CostEngineering.eu