

Piping Composites Europe (DACE)



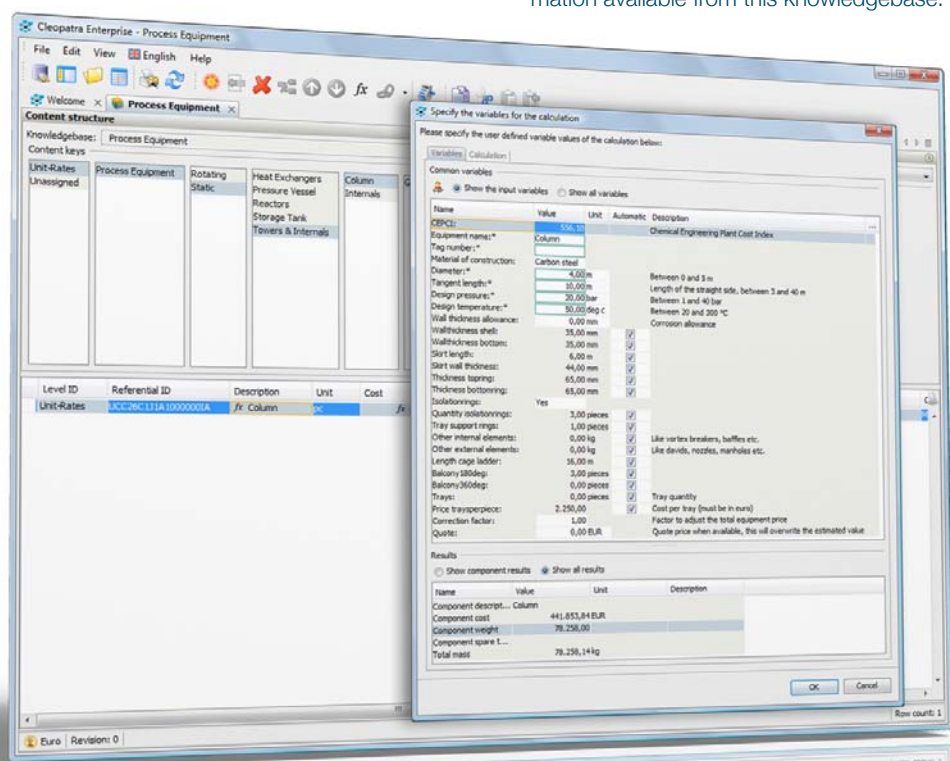
Piping Composites Europe (DACE)

The Cost Engineering knowledgebase with information on piping composites for Europe contains combinations of multiple unit-rates for fast estimating purposes. The knowledgebase Piping Composites Europe is composed by using parameters defined by Cost Engineering based on historical information. The piping composites are piping systems up to 24" containing pipe, fittings, flanges, and valves either with or without insulation or personal protection for carbon steel, stainless steel, and high alloy piping such as duplex, alloy 20 and hastelloy. These piping systems are built up with unit-rates and contain all the components from putting up the first support to final testing.

The knowledgebase Piping Composites Europe is based on the DACE Labour Norms as they are supplied by the DACE. However, where DACE only supplies the labour norms, Cost Engineering has added price information as well as adding other details to the knowledgebase. This means that the knowledgebase Piping Composites Europe now gives you all the data you need for the estimation of any piping system installation. The knowledgebase Piping Composites Europe holds all the information you need to estimate your projects quickly and accurately in an early stage based on preliminary plot plans with determined lengths of piping systems. The knowledgebase Piping Composite Europe is normally applied for estimates according to AACE Cost Estimate Classification System Class 3 and Class 4.

“Composing an estimate has never been easier”

All facets of piping work are covered by this knowledgebase. From the cost of an actual unit to the labour hours involved. All projects you are looking for can be covered easily from the information available from this knowledgebase.





Piping Composites Europe (DACE)

Knowledgebase Specifications

Piping Composites Europe (DACE)

Piping Composites:

Disciplines:

- Piping
- Insulation
- Painting

Activities:

- Prefabrication
- Field installation
- Dismount
- Supply

Piping systems with following Components:

- Pipe
- Fittings
- Flanges
- Valves
- Handling
- Welds
- Pipe supports
- Flange connections
- Hydrostatic testing
- X-Ray testing
- Gamma testing
- Painting
- Insulation
- Heat Treatment

Ranges:

- Pipe diameters 1/2" - 24"
- Insulation thickness 30 -> 140 mm

Materials:

- Carbon Steel
- Stainless Steel
- Duplex
- Alloy 20
- Hastelloy
- Titanium

Labour rates:

- Fitter
- Welder
- NDT tester
- Assistant tester
- Insulation worker
- Painter
- Grit Blaster



COST ENGINEERING

www.CostEngineering.eu
Sales@CostEngineering.eu